



**LANGHOLZ WILSON ELLIS**

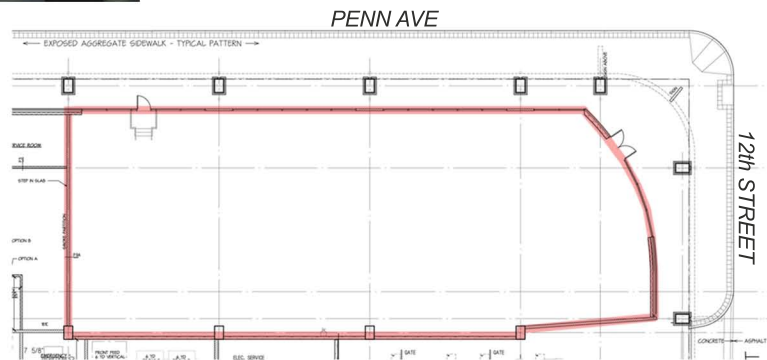
Commercial Real Estate Services

# For Lease Grant Street Transportation Center Downtown Pittsburgh, PA



- 6,375 square feet of leaseable area
- First floor retail space within the new Greyhound Bus Station and 1,000 space parking garage
- Glass storefront frontage along Penn Avenue and 12th Street
- Conveniently located between the Cultural District and the Strip District

- Located within one block of the David L. Lawrence Convention Center (345,000 visitors in 2007), Heinz History Center (120,500 visitors in 2007), Courtyard by Marriot, Hampton Inn & Suites, and Westin Convention Center
- Close proximity to the Pennsylvanian and new residential conversions on Penn Avenue and Liberty Avenue.
- Ready now for your improvements



For further information, contact:

**Sandy Cikovic**  
(scikovic@LWEre.com)

or

**Angela Gillot**  
(agillot@LWEre.com)

**412-261-2200**

606 Liberty Avenue • Suite 300 • Pittsburgh, PA 15222 • Phone: 412-261-2200 • Fax: 412-261-2075

ALL INFORMATION FURNISHED REGARDING PROPERTY FOR SALE, RENTAL OR FINANCING IS FROM SOURCES DEEMED RELIABLE. NO REPRESENTATION IS MADE AS TO THE ACCURACY THEREOF, AND IT IS SUBMITTED SUBJECT TO ERRORS, OMISSIONS, CHANGE OF PRICE, RENTAL, OR OTHER CONDITIONS, PRIOR SALE LEASE, FINANCING OR WITHDRAWAL WITHOUT NOTICE. LANGHOLZ WILSON ELLIS, INC., WILL MAKE NO REPRESENTATION, AND ASSUME NO OBLIGATION, REGARDING THE PRESENCE OR ABSENCE OF TOXIC OR HAZARDOUS WASTE OR SUBSTANCES OR OTHER UNDESIRABLE MATERIAL ON OR ABOUT THE PROPERTY.

A MEMBER OF  
**CHAINLINKS**  
RETAIL ADVISORS





**LANGHOLZ WILSON ELLIS**  
Commercial Real Estate Services

# For Lease

## Grant Street Transportation Center

### Downtown Pittsburgh, PA

